



EVENT GUIDE 2024

WELCOME TO GRAN FONDO STRADE BIANCHE ENEL 2024

FASTEN YOUR HELMET, TIE YOUR SHOES, AND GET IN THE SADDLE FOR THE NINTH EXCITING EDITION OF THE CRETE SENESI CLASSIC!

MAKE YOUR MARK IN THE LEGEND AND IMMERSE YOURSELF IN THE UNIQUE SCENERY OF THE TUSCAN HILLS. **VENTURE THROUGH THE DUST AND MUD OF THE ICONIC GRAVEL ROADS**, GET UP ON YOUR PEDALS TO TACKLE **THE TOLFE AND SANTA CATERINA CLIMBS** AND SAVOUR THE THRILL OF THE TRIUMPHANT **ARRIVAL IN PIAZZA DEL CAMPO!**

IN THIS GUIDE YOU WILL FIND ALL THE USEFUL INFORMATION ABOUT THE EVENT.

RIDE INTO THE LEGEND





03/03/2024
9th edition

START >



Fortezza Medicea
viale Rinaldo Franci



8:00



> FINISH



Piazza
del Campo



average temperatures in Siena
in the first days of March are between
2°-12° C

GRAN FONDO



Distance
138,5 km



Gravel roads
41,8 km



Elevation gain
2000 km



Distance
87,0 km



Gravel roads
21,6 km



Elevation gain
1350 km



MEDIO FONDO

PROGRAM FRIDAY AND SATURDAY

FRIDAY, MARCH 1 2024

13:00

- **OPENING OF VILLAGE, BIKE PARK**
- **BEGINNING OF RACE NUMBER DISTRIBUTION** at Giardini la Lizza, viale Rinaldo Franci, Siena
- **BEGINNING OF RACE PACK DISTRIBUTION** at Fortezza di Santa Barbara (Fortezza Medicea) Piazza Caduti delle Forze Armate, Siena

16:00

- **TEAM'S PRESENTATION STRADE BIANCHE AND STRADE BIANCHE WOMEN ELITE**

19:00

- **CLOSING OF VILLAGE, BIKE PARK AND END OF RACE NUMBER DISTRIBUTION**

SATURDAY, MARCH 2 2024

08:30

- **OPENING OF VILLAGE, BIKE PARK**
- **BEGINNING OF RACE NUMBER DISTRIBUTION** at Giardini la Lizza, Viale Rinaldo Franci, Siena
- **BEGINNING OF RACE PACK DISTRIBUTION** at Fortezza di Santa Barbara (Fortezza Medicea) Piazza Caduti delle Forze Armate, Siena

09:35

- **START STRADE BIANCHE WOMEN ELITE**

11:10

- **START STRADE BIANCHE**

12:00

- **START BIKE SHOW STRADE BIANCHE JUNIOR**

18:30

- **CLOSING OF VILLAGE, BIKE PARK AND END OF RACE NUMBER DISTRIBUTION**

PROGRAM SUNDAY

SUNDAY, MARCH 3 2024

6:30

- OPENING STARTING GRIDS GRAN FONDO STRADE BIANCHE

8:00

- START 9TH EDITION OF THE GRAN FONDO STRADE BIANCHE ENEL, viale Rinaldo Franci, Siena;
FINISH PIAZZA DEL CAMPO, SIENA

11:00

- AWARD CEREMONY MEDIO FONDO
PIAZZA DEL CAMPO

12:00

- START OF PASTA PARTY AT THE VILLAGE

12:30

- AWARD CEREMONY GRAN FONDO
PIAZZA DEL CAMPO

13:30

- AWARD CEREMONY AGE CATEGORIES
GIARDINI LA LIZZA

15:30

- RACE TIME LIMIT

16:30

- CLOSING OF VILLAGE



RACE NUMBER PICK UP



March 1
from 13:00 to 19:00

March 2
from 08:30 to 18:30

It will not be possible to collect the start number on race day.

IT WILL BE POSSIBLE TO DELEGATE THE RACE NUMBER PICK-UP

[DOWNLOAD FORM](#)

**NEW LOCATION
FOR START NUMBER
PICK-UP**



Giardini
la Lizza

**DO YOU HAVE
A UCI CYCLING
LICENSE?**

.... **YES**

NO

REMEMBER TO BRING:

- ☒ THE MEMBERSHIP CARD VALID FOR 2024
- ☒ THE MEDICAL CERTIFICATE FOR COMPETITIVE CYCLING EVENTS VALID ON MARCH 3
- ☒ YOUR ID

REMEMBER TO BRING:

- ☒ THE MEDICAL CERTIFICATE FOR COMPETITIVE CYCLING EVENTS VALID ON MARCH 3
- ☒ YOUR ID

GO TO THE DAILY LICENCE DESK

Inside the technical envelope you will find the **PASTA PARTY coupon**, which will be held at **Giardini La Lizza**

RACE NUMBER PICK UP

DAILY LICENSE



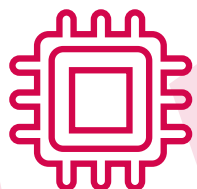
If you did not buy a daily license during the registration process, you can purchase it onsite.

the cost
10 euro

Remember to follow the DAILY LICENSES signs.

DAILY LICENSE

CHIP



If you're interested **in renting a chip:**

the cost
10 euro

(out of which 5 euro are returned at the end of the race once the chip is handed back in)

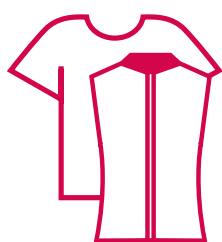
The chip has to be returned at the Village at the Giardini la Lizza.

MERCHANDISING

THE OFFICIAL MERCHANDISING PRODUCTS THAT YOU PURCHASED DURING REGISTRATION CAN BE PICKED UP **AT THE DEDICATED COUNTER AT THE START NUMBER PICK-UP AT THE GIARDINI LA LIZZA.**



RACE PACK



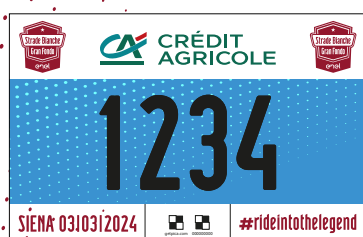
After you have collected your start number, you can pick up the **OFFICIAL RACE PACK AT THE FORTEZZA SANTA BARBARA (FORTEZZA MEDICEA)**.

Together with the race pack, you will receive the **OFFICIAL JERSEY AND VEST BY SPORTFUL**.

The size of the jersey and vest that will be given to each participant is the one indicated during registration.

STARTING AREA

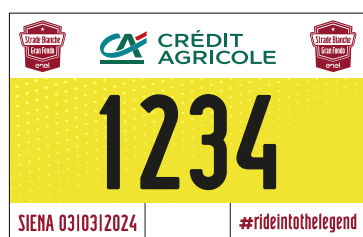
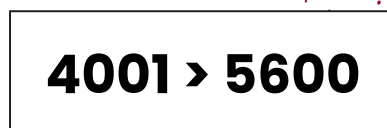
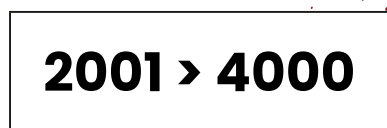
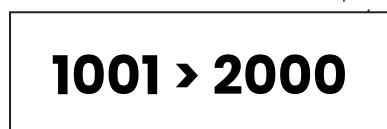
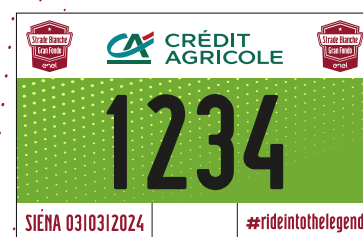
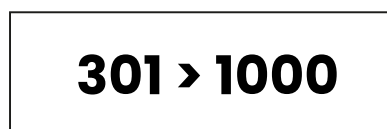
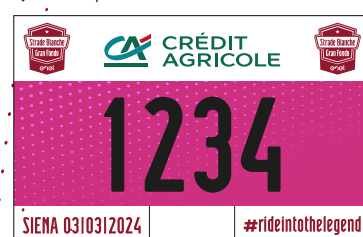
Follow the dedicated signs to access the starting area.



CORRAL

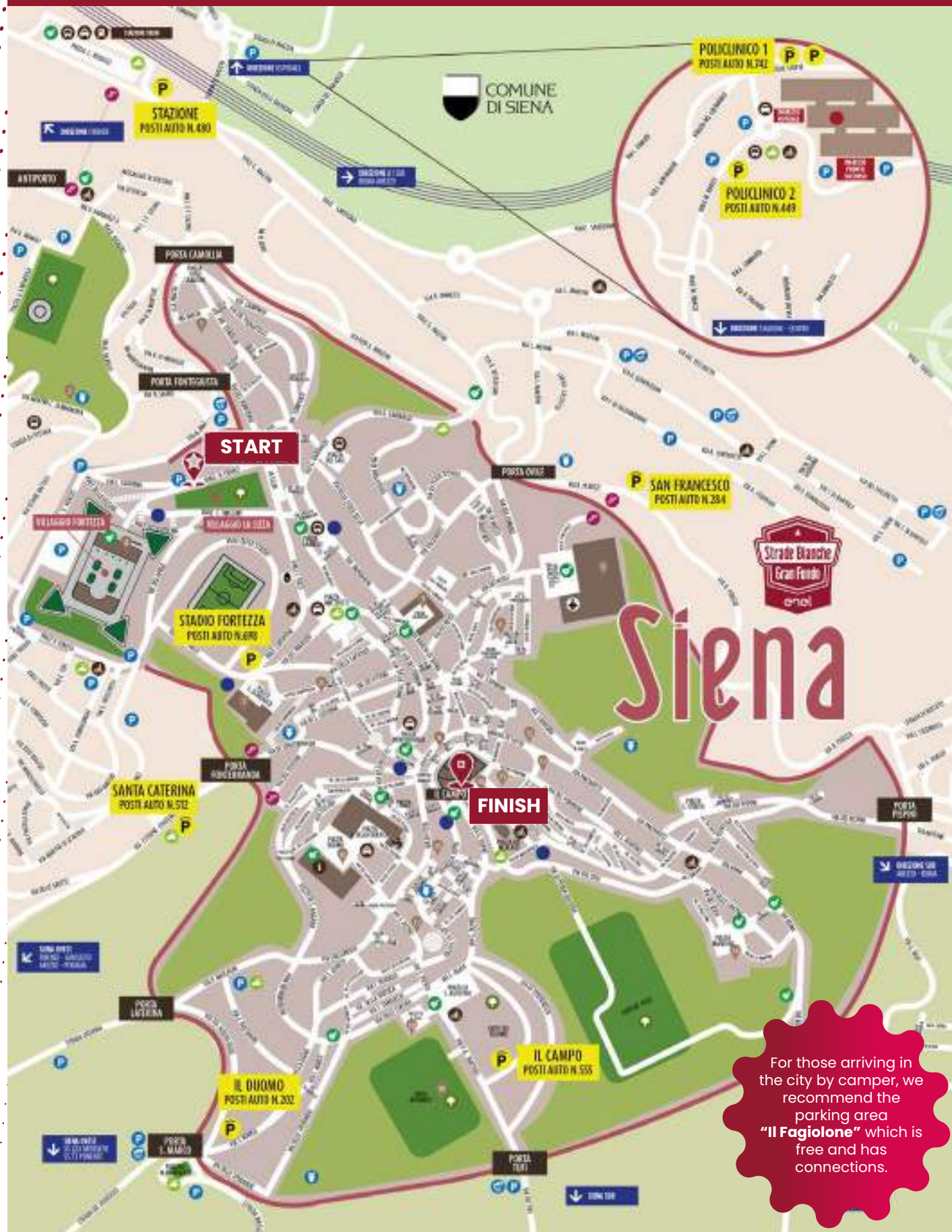


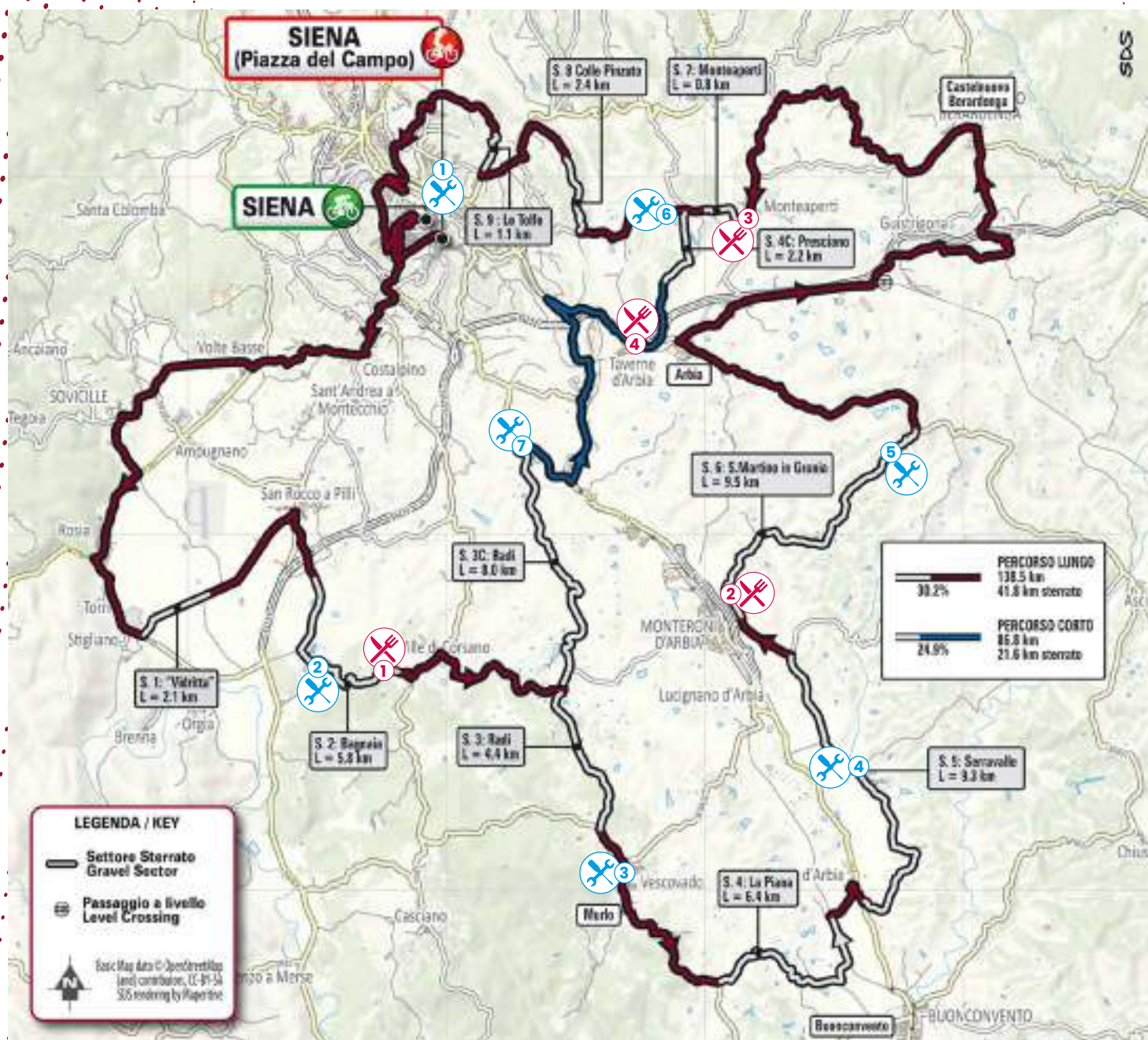
START NUMBERS



PARKING

IN YELLOW PLEASE FIND THE RECCOMENDED PARKINGS. For real time info on occupancy consult the website www.sigericospa.it





PROFILE - MAP - GPX TRACKS

MEDIO FONDO GRAN FONDO



SHIMANO TECHNICAL ASSISTANCE OPENING TIMES

1. Km 0 (GF+MF) 6:00 - 8:30
2. Km 30 (GF+MF) 8:30 - 10:00
3. Km 45.5 (GF) 9:00 - 11:00
4. Km 58.7 (GF) 9:00 - 11:30
5. Km 75 9:30 (GF) - 12:30
6. Km 115 (GF) Km 63,5 (MF) 9:30 - 14:30
7. Km 45 (MF) 9:00 - 11:00



REFRESHMENT AREAS

1. Km 33 (GF+MF)
2. Km 75 (GF)
3. Km 113 (GF)
4. Km 55 (MF)

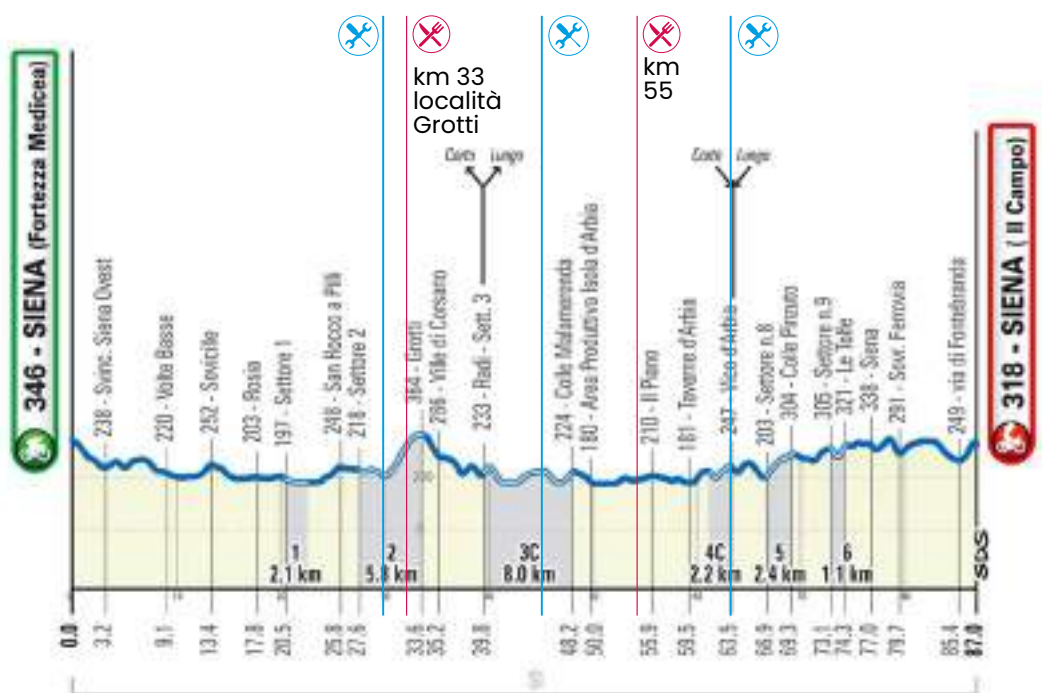
PROFILES

Gran Fondo



NEW: STARTING THIS YEAR, THE TOTAL NUMBER OF REFRESHMENT AREAS WILL INCREASE FROM THREE TO FOUR, WITH THE LAST REFRESHMENT AREA NO LONGER BEING SHARED FOR BOTH ROUTES.

Medio Fondo



GRAVEL SECTORS

Gran Fondo



S. 1: "Vidritta"
L= 2.1 km



S. 2: Bagnaia
L= 5.8 km



S. 3: Radi
L= 4.4 km



S. 4: La Piana
L= 6.4 km



S. 5: Serravalle
L= 9.3 km



S. 6: Martino in Grania
L= 9.5 km



S. 7: Monteperti
L= 0.8 km

TRATTO CRONOMETRATO



S. 8: Colle Pinzuto
L= 2.4 km

TRATTO CRONOMETRATO



S. 9: Le Tolle
L= 1.1 km

GRAVEL SECTORS

Medio Fondo



S. 1: "Vidritta"
L= 2.1 km



S. 2: Bagnala
L= 5.8 km



S. 3: Radi
L= 8.0 km



S. 4: Presciano
L= 2.2 km

TRATTO CRONOMETRATO



S. 5: Colle Pinzuto
L= 2.4 km

TRATTO CRONOMETRATO



S. 9: Le Tolfe
L= 1.1 km

TIMETABLE - GRAN FONDO

STRADE BIANCHE			TIMETABLE - GRAN FONDO								
Alt.	Località		KM.			Medie Orarie					
			parziali	percorsi	da perc.	18	24	30	34	36	40
PROVINCIA DI SIENA											
340	Siena Fortezza Medicea - PARTENZA		0,00	0,000	138,500	8.00	8.00	8.00	8.00	8.00	8.00
238	Svincolo Siena Ovest		3,20	3,200	135,300	8.10	8.08	8.06	8.05	8.05	8.04
220	Volte Basse		5,90	9,100	129,400	8.30	8.22	8.18	8.16	8.15	8.13
252	Sovicille		4,30	13,400	125,100	8.44	8.33	8.26	8.23	8.22	8.20
203	Rosia		4,40	17,800	120,700	8.59	8.44	8.35	8.31	8.29	8.26
197	Settore 1		2,70	20,500	118,000	9.08	8.51	8.41	8.36	8.34	8.30
248	San Rocco a Pilli		5,30	25,800	112,700	9.26	9.04	8.51	8.45	8.43	8.38
183	Settore 2		1,80	27,600	110,900	9.32	9.09	8.55	8.48	8.46	8.41
364	Grotti		6,00	33,600	104,900	9.52	9.24	9.07	8.59	8.56	8.50
286	Ville di Corsano		1,60	35,200	103,300	9.57	9.28	9.10	9.02	8.58	8.52
233	Deviazione Percorsi	Radi – Settore 3	4,50	39,700	98,800	10.12	9.39	9.19	9.10	9.06	8.59
281	Lupompesi		4,40	44,100	94,400	10.27	9.50	9.28	9.17	9.13	9.06
296	Vescovado		1,40	45,500	93,000	10.31	9.53	9.31	9.20	9.15	9.08
207	Settore 4		4,90	50,400	88,100	10.48	10.06	9.40	9.28	9.24	9.15
161	La Piana		3,90	54,300	84,200	11.01	10.15	9.48	9.35	9.30	9.21
149	Ponte d'Arbia - Innesto Cassia		3,80	58,100	80,400	11.13	10.25	9.56	9.42	9.36	9.27
146	Cassia bivio per Pieve Sprenna - Settore 5		0,60	58,700	79,800	11.15	10.26	9.57	9.43	9.37	9.28
232	Località Sprenna bivio per Albereto		2,50	61,200	77,300	11.24	10.33	10.02	9.48	9.42	9.31
165	Monteroni d'Arbia bivio SP12 fine Settore 5		6,80	68,000	70,500	11.46	10.50	10.16	10.00	9.53	9.42
165	Monteroni d'Arbia – Settore 6		1,60	69,600	68,900	11.52	10.54	10.19	10.02	9.56	9.44
281	San Martino in Grania		5,20	74,800	63,700	12.09	11.07	10.29	10.12	10.04	9.52
338	Bv per Asciano fine Settore 6		4,00	78,800	59,700	12.22	11.17	10.37	10.19	10.11	9.58
174	Arbia		7,80	86,600	51,900	12.48	11.36	10.53	10.32	10.24	10.09
305	Passaggio a livello		5,80	92,400	46,100	13.08	11.51	11.04	10.43	10.34	10.18
322	Croce di Carnesecca		4,40	96,800	41,700	13.22	12.02	11.13	10.50	10.41	10.25
345	Castelnuovo Berardenga		4,40	101,200	37,300	13.37	12.13	11.22	10.58	10.48	10.31
260	San Piero		8,30	109,500	29,000	14.05	12.33	11.39	11.13	11.02	10.44
230	Monteaperti – Settore 7		3,50	113,000	25,500	14.16	12.42	11.46	11.19	11.08	10.49
247	Ricongiunzione Percorsi	Vico d'Arbia	2,00	115,000	23,500	14.23	12.47	11.50	11.22	11.11	10.52
203	Settore 8		3,40	118,400	20,100	14.34	12.56	11.56	11.28	11.17	10.57
304	Colle Pinzuto		2,40	120,800	17,700	14.42	13.02	12.01	11.33	11.21	11.01
272	Settore 9		3,80	124,600	13,900	14.55	13.11	12.09	11.39	11.27	11.06
321	Le Tolfe fine Settore 9		1,20	125,800	12,700	14.59	13.14	12.11	11.42	11.29	11.08
338	Siena		2,70	128,500	10,000	15.08	13.21	12.17	11.46	11.34	11.12
291	Sovrappasso ferrovia		2,70	131,200	7,300	15.17	13.28	12.22	11.51	11.38	11.16
342	Via di Fontebranda		5,70	136,900	1,600	15.36	13.42	12.33	12.01	11.48	11.25
318	Siena Piazza del Campo - ARRIVO		1,60	138,500	0,000	15.41	13.46	12.37	12.04	11.50	11.27

TIMETABLE - MEDIO FONDO

STRADE BIANCHE											TIMETABLE - MEDIO FONDO										
Alt.	Località			KM.			Medie Orarie														
				parziali	percorsi	da perc.	18	24	30	33	36	38									
PROVINCIA DI SIENA																					
240	Siena Fortezza Medicea - PARTENZA			0,00	0,000	87,000	8.00	8.00	8.00	8.00	8.00	8.00	8.00								
238	Svincolo Siena Ovest			3,20	3,200	83,800	8.10	8.08	8.06	8.05	8.05	8.05	8.05								
220	Volte Basse			5,90	9,100	77,900	8.30	8.22	8.18	8.16	8.15	8.14	8.14								
252	Sovicille			4,30	13,400	73,600	8.44	8.33	8.26	8.24	8.22	8.21	8.21								
203	Rosia			4,40	17,800	69,200	8.59	8.44	8.35	8.32	8.29	8.28	8.28								
197	Settore 1			2,70	20,500	66,500	9.08	8.51	8.41	8.37	8.34	8.32	8.32								
248	San Rocco a Pilli			5,30	25,800	61,200	9.26	9.04	8.51	8.46	8.43	8.40	8.40								
183	Settore 2			1,80	27,600	59,400	9.32	9.09	8.55	8.50	8.46	8.43	8.43								
364	Grotti			6,00	33,600	53,400	9.52	9.24	9.07	9.01	8.56	8.53	8.53								
286	Ville di Corsano			1,60	35,200	51,800	9.57	9.28	9.10	9.04	8.58	8.55	8.55								
233	Deviazione Percorsi	Radi – Settore 3		4,50	39,700	47,300	10.12	9.39	9.19	9.12	9.06	9.02	9.02								
228	Colle Malamerenda			8,50	48,200	38,800	10.40	10.00	9.36	9.27	9.20	9.16	9.16								
187	Bivio per Taverne d'Arbia			1,80	50,000	37,000	10.46	10.05	9.40	9.30	9.23	9.18	9.18								
215	Siena - Rotatoria ss 715			5,90	55,900	31,100	11.06	10.19	9.51	9.41	9.33	9.28	9.28								
188	Taverne d'Arbia			3,60	59,500	27,500	11.18	10.28	9.59	9.48	9.39	9.33	9.33								
198	Settore 4			2,50	62,000	25,000	11.26	10.35	10.04	9.52	9.43	9.37	9.37								
247	Ricongiunzione Percorsi	Vico d'Arbia		1,50	63,500	23,500	11.31	10.38	10.07	9.55	9.45	9.40	9.40								
203	Settore 5			3,40	66,900	20,100	11.43	10.47	10.13	10.01	9.51	9.45	9.45								
304	Colle Pinzuto			2,40	69,300	17,700	11.51	10.53	10.18	10.06	9.55	9.49	9.49								
272	Settore 6			3,80	73,100	13,900	12.03	11.02	10.26	10.12	10.01	9.55	9.55								
321	Le Tolfe fine Settore 6			1,20	74,300	12,700	12.07	11.05	10.28	10.15	10.03	9.57	9.57								
338	Siena			2,70	77,000	10,000	12.16	11.12	10.34	10.20	10.08	10.01	10.01								
291	Sovrappasso ferrovia			2,70	79,700	7,300	12.25	11.19	10.39	10.24	10.12	10.05	10.05								
318	Siena Piazza del Campo - ARRIVO			7,30	87,000	0,000	12.50	11.37	10.54	10.38	10.25	10.17	10.17								

TIME LIMITS



TIME LIMIT
7:30 H

TIME LIMIT by
15:30
of March 3, 2024



NEW
plus 30 min
to the time
limit



TIME LIMIT
10:30

TO TRANSIT THROUGH RADI

All the riders who will
transit through Radi
AFTER THIS TIME,
MUST RIDE THE SHORT
ROUTE OF 87 KM
(MEDIO FONDO).



NEW
plus 30 min
to the time
limit



END
OF RACE

The vehicle with the sign "FINE GARA
CICLISTICA" establishes THE END OF THE
ROAD CLOSURE.

The athletes overtaken by the "end race" car
will continue the race as normal cyclists and
must observe the traffic laws keeping the
race number on their back.



END
OF THE EVENT

The vehicle with the sign "FINE
MANIFESTAZIONE", FOLLOWS THE LAST
PARTICIPANT and establishes THE
CLOSURE OF THE ENTIRE EVENT WITHIN
THE MAXIMUM OF 7.30 HOURS, as the
race regulations.

SERVICES



PASTA PARTY

ON SUNDAY, MARCH 3 from noon to 16:00, for all participants there will be a Pasta Party at the Village at Giardini la Lizza.



BIKE PARK

From FRIDAY, MARCH 1 TO SUNDAY, MARCH 3 at the Village at Giardini la Lizza. Bike Park is subject to availability.



BROOM SERVICE

A broom wagon service will be operative at the back of the race.

We remind you that the bicycles of the riders that are collected will be deposited at the BIKE PARK as soon as the vehicles return.

It will be possible to collect the bicycles based on the race number corresponding to the race number fixed on the bicycle and an ID document.

MECHANICAL ASSISTANCE BY MOTORBIKE

The event organization will also provide mechanical assistance with motorbikes along the race route. Please note spare components are subject to charge.

SHIMANO TECHNICAL ASSISTANCE

Shimano will provide Technical Assistance at the start and at 6 fixed points along the course, please find more info on page 19.



RESPECT

Respect During the race we invite you to RESPECT THE ENVIRONMENT AND PERSONNEL that decided to give up their Sunday to allow you to have an unforgettable experience.

EMERGENCY NUMBER
+39 331 688 8497

ONCE AGAIN THIS YEAR, SHIMANO WILL BE AT YOUR SIDE TO PROVIDE TECHNICAL SUPPORT AT THE GRAN FONDO/MEDIO FONDO STRADE BIANCHE, BOTH BEFORE AND DURING THE RACE!

Shimano will have its own stand at the race village, where experienced mechanics will be happy to check your bike in the days leading up to the race. Shimano will also provide help and technical support during the race at **six fixed locations** along the route.

Granfondo riders can thus benefit from the same degree of expertise and care offered to professionals, a service available all year round at the **Shimano Service Centres**.

We highly recommend always carrying an anti-puncture kit and two spare inner tubes. In case of need, do not hesitate to ask the Shimano experts for help!

BEFORE THE RACE - Guests will have the opportunity to have their bikes checked at the Shimano stand, located inside the race village at the Fortezza Medicea. The **Shimano Bike-Check** includes a free general inspection of your bike, the status of its components and their possible replacement subject to a charge.

Additionally, you will receive valuable tips from the Shimano Service Centre mechanics on how to take regular care of your bike and what interventions to carry out in the following months.

The **Shimano stand** will remain open on **Sunday 3 March, from 6:00 to 8:30 a.m.** to provide quick last-minute support in case of need before the start of the race.

DURING THE RACE

Six Shimano service points will be set up along the race route, where specialised mechanics will provide support and - where possible - assistance in case of punctures and other technical problems.

Where to find the Shimano points?

Check out where to find the six Shimano points (and their opening times) at the village: maps can be found both at the Shimano stand and at the bib collection. The map is also available on our social channels.

Please note that additional assistance can be found along the route but remember that official Shimano assistance is only available at the 6 fixed points mentioned above.

AFTER THE RACE

Visit your local **Shimano Service Centre** frequently and have your bike checked at regular intervals. This is an important procedure to always ensure proper safety and performance!

Find the one closest to you here: <https://www.shimanoservicecenter.com/it/rivenditori/>

FINISHER MEDAL

At the finish line you will receive the **OFFICIAL 2024 GRAN FONDO STRADE BIANCHE ENEL FINISHER'S MEDAL.**



IF YOU HAVE PURCHASED THE MEDAL CUSTOMIZATION, YOU WILL HAVE TO GO TO THE DEDICATED STAND AT GIARDINI LA LIZZA TO HAVE THE MEDAL ENGRAVED WITH NAME AND FINISH TIME.

IF YOU HAVE NOT PURCHASED THE SERVICE OF MEDAL CUSTOMIZATION AHEAD, DO NOT WORRY! YOU CAN BUY IT AT THE VILLAGE OR ON THE RACE DAY FOR 15 EURO.

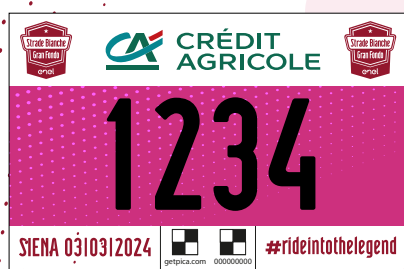
OFFICIAL PHOTOS



getpica.com

THANKS TO PICA YOU WILL BE ABLE TO PURCHASE YOUR PHOTOS AT THE GRAN FONDO STRADE BIANCHE IMMEDIATELY VIA YOUR SMARTPHONE!

HOW IT WORKS:



- Take part in the **Gran Fondo Strade Bianche** making sure that **the race number is clearly visible**
- Go to **getpica.com** and create your account
- **Enter the 9-digit code** printed next to the race number
- View your photos and share them with friends!



SOCIAL MEDIA

SHARE YOUR EXPERIENCE BY INCLUDING OUR HASHTAGS:

#GFSTRADEBIANCHE
#RIDEINTOTHELEGEND

FOLLOW US ON:



Gran Fondo Strade Bianche



@gf_stradebianche



gfstradebianche.it

STRADE BIANCHE, STRADE GREEN

Our goal is to reduce the impact on the territory while preserving the allure of the gravel roads and the beauty of the Gran Fondo Strade Bianche landscapes.

TO DO SO, WE NEED YOUR SUPPORT!

Help us make Gran Fondo Strade Bianche greener and greener by properly disposing of waste at the collection points placed inside the race village and the refreshment areas.

ALONG THE START CORRALS THERE WILL BE WASTE DISPOSAL BAGS TO USE EXCLUSIVELY FOR TEXTILE COLLECTION.

USE THE RIGHT CONTAINERS... CYCLE, HAVE FUN AND #BUTTABENE



Servizi ecologici integrati **Toscana**

**FOR MORE
INFORMATION**

WWW.SEITOSCANA.IT

★ STRADE BIANCHE JUNIOR ★

TWO DAYS OF FUN AND EDUCATIONAL EXPERIENCES
FOR THE LITTLE FUTURE LEGENDS OF STRADE BIANCHE AND THE SPORT OF CYCLING!

PEDALA & RICICLA (Cycle&Ricicle)

ROAD SAFETY EDUCATION AND ENVIRONMENTAL EDUCATION ACTIVITIES
for all children from 5 to 12 years

Fortezza Medicea- Siena

FRIDAY 1 MARCH from 13:00 to 19:00

SATURDAY 2 MARCH from 8:30 to 18:30

BIKE SHOW

1st gathering of the 2024 cycling season for members
of the GIOVANISSIMI categories (children from 5 to 12 years)

SATURDAY 2 MARCH from 12:00 to 13:00

meeting place from 8:30 at Giardini la Lizza (on the corner
of viale Rinaldo Franci - via Cesare Maccari) - Siena



TOP SIGHTS

UNESCO – WORLD HERITAGE SITE

Siena is one of those towns that looks like it has stepped out of a postcard. Siena's city centre is a UNESCO World Heritage site since 1995. One of the best preserved Medieval towns in the whole of Italy.

Inside the seven-kilometre-long city walls, visitors can admire elegant buildings, ancient castles, museums, countless churches and fountains, secluded and often steep alleys and gorgeous parks and gardens – also referred to as the "countryside in the city" – offering glimpses of exceptional harmony with the city's architecture. An extraordinary heritage, to be cherished and looked after every day.

Piazza del Campo, the city's main square, represents the history, traditions and passions of Siena and is by far its most important social centre, where festivals, celebrations and the world-famous Palio di Siena horse race have been organised for centuries.



TOP SIGHTS

TERRE DI SIENA

The Terre di Siena tourist area (composed of nine municipalities: Asciano, Buonconvento, Chiusdino, Monticiano, Monteroni d'Arbia, Murlo, Rapolano Terme, Siena and Sovicille) is a land that deserves to be explored at a slow pace – perhaps on foot or by bicycle – so as to fully appreciate its nature, art and food and wine. The Via Francigena is the historic itinerary that used to connect Canterbury to Rome and has been an important route of communication, cultural exchange, trade and pilgrimage for centuries. The Via Lauretana connects Siena to Asciano and allows visitors to get to know the beautiful Crete Senesi (literally the "clays of Siena") area immediately to the south of Siena. The Via Romea is the link between Siena and Florence, two cities that have shaped the history of Tuscany.

LOCAL CUISINE

Deep in the heart of a province that is an authentic centre of excellence (wine, extra virgin olive oil, pasta, meat, cured meats, sweets), Sienese gastronomy represents a unique combination of taste and tradition, based on a fundamental principle: the supreme quality of the products. Whilst an ideal menu is impossible to draw up, the spleen crostini, picci with Cinta Senese ragout, pappardelle with hare, Chianina beef steak and Pan co' Santi can certainly be considered among the most symbolic dishes. To round off your Sienese experience, match each recipe with a great wine, such as Brunello di Montalcino, Vino Nobile di Montepulciano, Chianti Classico and Vernaccia di San Gimignano.



TOP SIGHTS

THE MUSEUMS OF SIENA

There are three main museums that provide an insight into the rich artistic heritage of the city of Siena.

The Civic Museum, located inside the Palazzo Pubblico in the famously distinctive square of Piazza del Campo, houses a vast collection of works of art of incomparable value, of which Simone Martini's "Maestà" and Ambrogio Lorenzetti's "Allegory of Good and Bad Government" are perhaps the most famous. Additionally, the Loggia dei Nove, located at the back of the palace, offers a breathtaking panoramic view of the Orto de' Pecci and the south of the city.

The former Santa Maria della Scala hospital – for centuries a shelter for wayfarers and pilgrims along the Via Francigena and later the city's hospital – is now a museum housing the admirable Pilgrims' Hall, frescoes, medieval ceramics, textiles, art objects and an archaeological museum.

The National Art Gallery, inside the Buonsignori and Brigidi Palaces, mainly includes examples and works of Siena's painting from the 13th to the 18th century and offers visitors a strictly chronological exhibition itinerary that spans the history of Sienese art up to the 17th century.



SPONSOR

PRESENTING SPONSOR



SPONSOR



OFFICIAL TIMEKEEPER



MOBILITY PARTNER



OFFICIAL NUTRITION PARTNER



OFFICIAL PARTNER



SUPPLIER



OFFICIAL WINE – OFFICIAL WATER



LOCAL PARTNER



INSTITUTIONAL PARTNER



OFFICIAL PHOTOSERVICE



ORGANIZATION



THANKS TO YOU – OUR AMAZING PARTICIPANTS!

It's going to be great to ride together and live
THE 2024 GRAN FONDO STRADE BIANCHE
ENEL EXPERIENCE.

We look forward to welcoming you in Siena!

#RideIntoTheLegend

